

Value of the Month

Positivity

Useful Information

[Term time absence form](#)

[Y6 Trip lunch order](#)

[Year 3 Gilwern Lunch order](#)

[Reception Vision & Growth](#)

Important dates coming up

Mon 3rd-Tues 4th Feb - Y4 Gilwern

Mon 10th Feb - Parent Consultations

Tues 11th Feb - Parent Consultations

Wed 12th Feb - Y6 class trip

Thurs 13th Feb - Y3 Gilwern

Mon 17th-Wed 19th Feb - Y5 Gilwern

Fri 21st Feb - 9.30am - Y6 Assembly (Parents welcome)

Welcome to our new look newsletter. At the top of the first page you will find imminent important dates as well as our value of the month and a useful information section with links to relevant forms.

There is now a page for each class with an update on their week and a reminder of important dates for each particular class. You can skip ahead to the relevant class by using the links at the bottom of this page.

Dydd Gwl Dewi Sant / St David's Day

St David's Day is fast approaching! As in previous years, we will be holding our annual school Eisteddfod on Tuesday 4th March. Children are invited to wear traditional Welsh costumes on that day or dress up as / wear something related to Wales e.g. dragon, daffodil, leek, coal miner, wear a Welsh rugby/football shirt or simply wear a red top.

St David's Day will take place on the first Tuesday after half term so all competitions will be completed before we break up for half term. Some of the competitions are compulsory and will be completed in lessons: art, handwriting and creative writing. Other competitions are voluntary, and pupils will put themselves forward if they want to take part - singing, Welsh recitation, model making, instrumentals, cookery (Y4-6).

If your child plays a musical instrument, make sure they get practicing! Staff will be holding competitions in the week beginning the 10th February and will take place on the days that the children have their lessons.

Instrumental competitions include:

- Strings
- Guitar
- Drums
- Woodwind and Recorder
- Piano

Contact Information

Contact Number: 01291 641774

Absence Line: Option 1

Email: shirenewtonprimary@monmouthshireschools.wales

Class Pages

<u>Reception</u>	<u>Year 2</u>	<u>Year 4</u>	<u>Year 6</u>
<u>Year 1</u>	<u>Year 3</u>	<u>Year 5</u>	

The model making competition and cookery (Years 4 - 6) are home learning tasks and we invite you to start making it now and send it into school the week beginning the 17th February. Pupils are free to use materials of their own choice but we ask for models to be no larger than 30cm x 30cm so the winning entries will fit on our display cabinets. If you need help with resources, please ask your child's class teacher.

Each class is invited to make a different model:

Reception = Daffodil

Year 4 = Coal mine

Year 1 = Sheep

Year 5 = Welsh building/ monument

Year 2 = Castle

Year 6 = Puppet of a famous welsh person/ character

Year 3 = Dragon

Individual class teachers will share any further class specific details via SCHOOP.

It is one of our favourite days of the year, so we hope your children take part in as many activities as possible. Diolch yn fawr.

General Reminders and Information sent to parents this week

- Y3 Gilwern Packed lunch order deadline before 04/02/25
- Y6 Cardiff Castle packed lunch order deadline before 04/02/25
- Information from School Nursing Team emailed to parents of Reception aged pupils
- Y6 letter regarding Beauty and the Beast performance
- Y3 Letter regarding Bristol Aerospace
- Y3 Gilwern kit list



Ymadrodd y penwythnos

Wn i ddim! - I don't know.

(Ooon ee thim)

A really useful phrase that can be used in an English conversation to promote bilingualism.

Reception

PE Days
Wednesday

Seren yr Wythnos

- ★ Famke
- ★ Hazel
- ★ Jamie

Reminders

Mon 10th Feb - Parent Consultations

Tues 11th Feb - Parent Consultations

Tues 11th Feb - Reception Vision & Growth
Screening

This week we have been.....



This week the children have been exploring and comparing capacity. They have also developed their listening skills in literacy and enjoyed reflecting on our winter topic. We have now started our new theme exploring diversity and culture within our class. The children have enjoyed learning about Welsh culture and participating in Welsh folk dancing sessions.

Year 1

PE Days

Friday

Reminders

Mon 10th Feb - Parent Consultations

Tues 11th Feb - Parent Consultations

Seren yr Wythnos

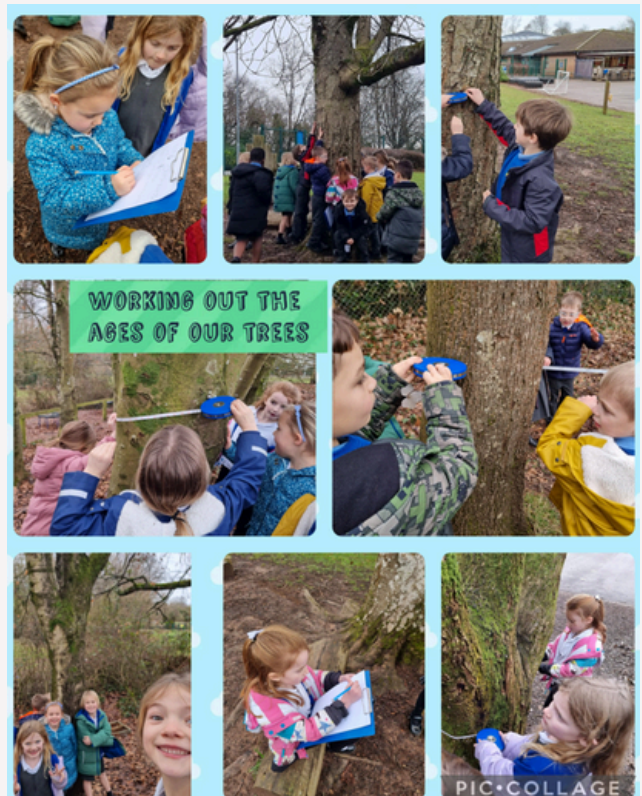
- ★ Huxley
- ★ Marcus
- ★ Sefi

This week we have been.....



Working in pairs, we used JIT 5 to create a graph, helping us compare and identify the oldest trees. Our most exciting discovery? The magnificent horse chestnut tree by the firepit is the oldest, estimated to be an incredible 214 years old! 🌳✨

Exploring and estimating the ages of our trees! We started by using measuring tapes, carefully reading the measurements in feet and inches as we measured around the trunks. Then, we entered our numbers into the iPads to calculate their approximate ages.



PE Days

Tuesday

Seren yr Wythnos

- ★ Harry J
- ★ Jasper
- ★ Sebastian

Reminders

Mon 10th Feb - Parent Consultations

Tues 11th Feb - Parent Consultations

Please can you send in any tubes and small cardboard boxes you have been collecting for castle building on Monday - diolch!

This week we have been.....



This week brought our long awaited trip to Chepstow Castle and it didn't disappoint! It was wonderful seeing the children exploring the different parts of the castle, confidently using the vocabulary we'd learnt in class. We discussed how people would have lived, how we would defend and even attack the castle. They came away with lots of ideas and are starting to think about how they could design and make their own castles.

In literacy, we wrote letters applying for jobs in the castle and recounts on our school trip, concentrating on using time conjunctions.

In maths, we continue to develop our knowledge of multiplication and division, using grouping and arrays to help us.

In Health & Wellbeing, we have been discussing the similarities and differences between us with our likes and dislikes.

Year 3

PE Days

Friday

Seren yr Wythnos

- ★ Jack
- ★ Michael
- ★ Penelope

Reminders

Mon 10th Feb - Parent Consultations

Tues 11th Feb - Parent Consultations

Thurs 13th Feb - Y3 Gilwern

Fri 11th Apr - 9.30am Y3 Assembly (Parents welcome)

This week we have been.....

Year 3 have demonstrated resilience in their learning this week, particularly when they began tackling multiplication in maths. Despite the challenge, every student has worked hard to master new concepts, showing great perseverance. In swimming lessons, the effort has been equally impressive, with all the children giving their best in the water and making noticeable progress. Meanwhile, in literacy, the class has been sharing predictions for the short film about an inventor. The whole class has also been getting creative with Canva, using it to build a timeline about the Wright brothers and their pioneering achievements in flight. The children have shown great enthusiasm as they research key events and bring them to life visually, developing both their digital skills and historical knowledge.

Well done to our Estimation Station winner for correctly guessing exactly 60 packets of chocolate sugar powder in the jar.



Year 4

PE Days

Tuesday

Seren yr Wythnos



Freya



Jacob



William

Reminders

Mon 3rd-Tues 4th Feb - Y4 Gilwern

Mon 10th Feb - Parent Consultations

Tues 11th Feb - Parent Consultations

Thurs 3rd Apr - 9.30am Y4 Assembly (Parents welcome)

Please can all Year 4 pupils arrive at school for 8am on Monday to ensure we leave promptly at 8.30am

This week we have been.....



During our P.E lessons we have been working on our sequencing, communication and incorporating those skills into creating a dance. The children have been showing great coordination and determination during these lessons. Bendigedig ✨

PE Days

Thursday

Seren yr Wythnos

- ★ Betsi
- ★ Harry
- ★ Jack

Reminders

Mon 10th Feb - Parent Consultations

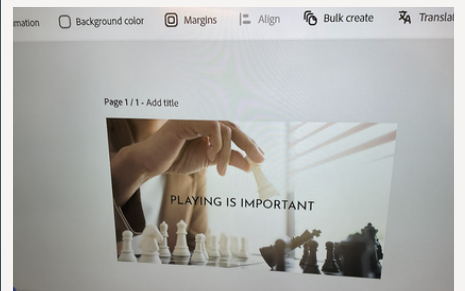
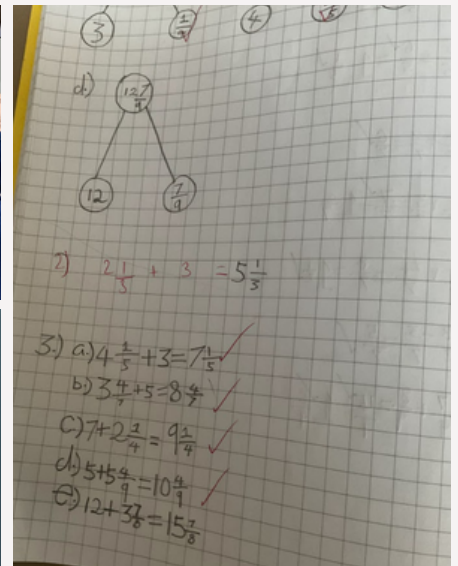
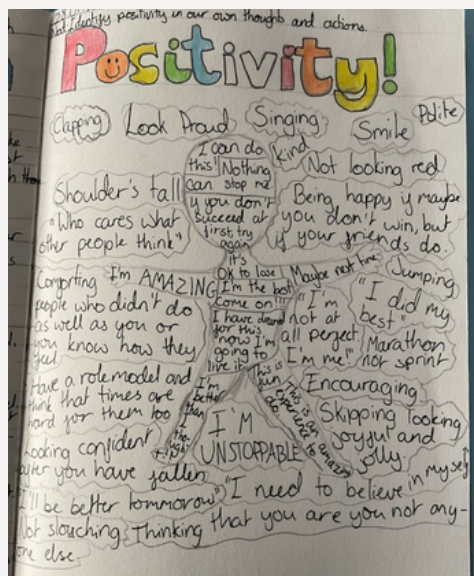
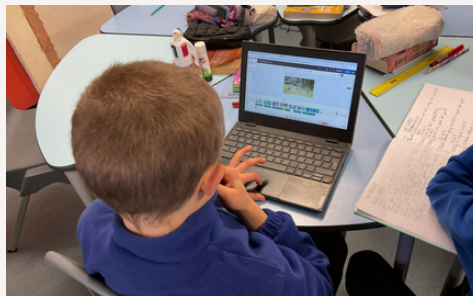
Tues 11th Feb - Parent Consultations

Mon 17th-Wed 19th Feb - Y5 Gilwern

Fri 28th Mar - 9.30am Y5 Assembly (Parents welcome)

This week we have been.....

A busy week in Year 5! We have been adding fractions and mixed numbers which has really tested our resilience. Da iawn pawb! We spent some time this week exploring what types of thoughts and actions a positive member of our school might display linked to our Value of the month for January. There was also a great deal of excitement and engagement linked to our persuasive short videos which demonstrate the positive impact playing social games can have on our wellbeing. A wonderful week with a wonderful class!



Year 6

PE Days

Thursday

Seren yr Wythnos

★ Danny

★ Jess

★ Monty

Reminders

Mon 10th Feb - Parent Consultations

Tues 11th Feb - Parent Consultations

Wed 12th Feb - Trip to Cardiff castle

Fri 21st Feb - 9.30am - Y6 Assembly (Parents welcome)

Mon 17th Mar - Cheptsow School Beauty and the Beast performance

This week we have been.....

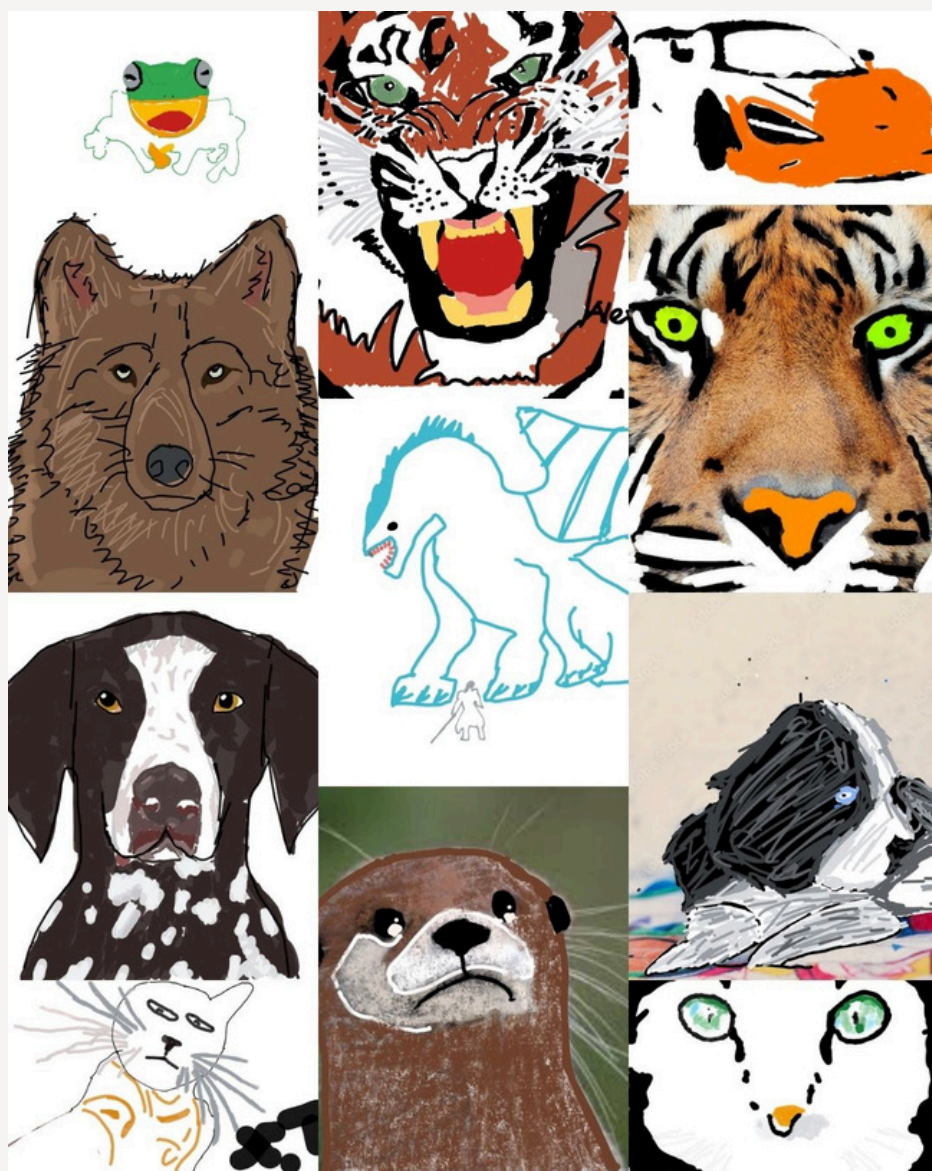


In PE, Year 6 have been creating 1940s Lindy Hop dance routines as part of their WW2 topic. They can't wait to showcase them

Clubs and Committees

Clubs

School run After School Clubs returned last week. Just a reminder that these clubs will not run week beginning Monday 10th February. This will also include Choir on Thursday 13th February.



Week 2 of Digital Art Club brought us some new members and some fresh talent as they explore line, colour and texture.

The children are blowing us away with their creativity and it's wonderful to see them develop their skills, resilience and confidence.

Important Dates

New information is highlighted

Spring Term 2025

Mon 3rd-Tues 4th Feb - Y4 Gilwern

Mon 10th Feb - Parent Consultations

Tues 11th Feb - Parent Consultations

Tues 11th Feb - Reception Vision & Growth Screening

Wed 12th Feb - Y6 class trip

Thurs 13th Feb - Y3 Gilwern

Mon 17th-Wed 19th Feb - Y5 Gilwern

Fri 21st Feb - 9.30am - Y6 Assembly (Parents welcome)

Mon 24th-Fri 28th Feb - Half term break

Mon 3rd Feb - Return to school

Tues 4th Mar - School St David's Day Celebrations

Fri 14th Mar - World Book Day

Mon 17th Mar - Y6 to Chepstow School Beauty and the Beast

Fri 21st Mar - Comic Relief

Thurs 27th Mar - Y3 Class trip

Fri 28th Mar - 9.30am Y5 Assembly (Parents welcome)

Thurs 3rd Apr - 9.30am Y4 Assembly (Parents welcome)

Tues 8th Apr - 2pm - Y4 Brass Concert (Parents welcome)

Fri 11th Apr - 9.30am Y3 Assembly (Parents welcome)

Mon 14th-Fri 25th Apr - Easter Holiday

Summer Term 2025

Mon 28th Apr - Return to school

Mon 5th May - Bank holiday

Fri 16th May - Charity fundraising day

Wed 21st May - Sports day (Y3-Y6 am, Rec-Y2 pm), parents invited

Mon 26th-Fri 30th May - Half term break

Mon 2nd Jun - Return to school

Wed 4th Jun - Reserve sports day (Y3-Y6 am, Rec-Y2 pm), parents invited

Mon 9th Jun-Fri 20th Jun - National test fortnight

Fri 13th Jun - 9.30am Y2 Assembly (Parents welcome)

Thurs 19th Jun - 9.30am Y1 Assembly (Parents welcome)

Fri 27th Jun - 9.30am Rec Assembly (Parents welcome)

Mon 30th Jun-Wed 2nd Jul - Y6 Residential trip

Friday 18th July - Last day of school for pupils

Fri 18th Jul - Y6 Leavers Assembly am

Mon 21st Jul - Inset day - School closed to pupils

Tues 22nd Jul - Summer holidays officially begin!

Community Corner



CHAOS
MUSIC AND DRAMA

Fancy joining us?

Chaos Music and Drama rehearse **Mondays & Fridays**
7-9pm at Bulwark Community Centre. We welcome
children (7+) and adults to join in our stage productions!

As well as fabulous on stage talent, we are always
looking for volunteers to help backstage with all of
our productions. This includes:

Directing	Stage crew
Musical Direction	Costumes
Choreography	Props
Sound	Front of House
Lighting	Social Media
Set building	Content Creation

Get in touch via our **website, email,**
Facebook or Instagram if you're interested

chaosmad.co.uk chaosinchepstow@live.co.uk



CHAOS
MUSIC AND DRAMA

NODA
For every stage

A PANTOMIME WHIRLWIND ADVENTURE OF
MAGIC AND MAYHEM

Dick Whittington

written by **Marianne Bowen**

FRI 31 JAN 7:30pm SAT 1 FEB 2:30pm
SAT 1 FEB 7:30pm SUN 2 FEB 2:30pm

**THE DRILL HALL,
CHEPSTOW**

Tickets £10 from chaosmad.co.uk
also available from Hannah's Music

GROUP DISCOUNT
SAVE 10%
when you buy 4



SHIRENEWTON
playscheme

AGES 3-12

8AM - 5:45
HALF DAYS
AVAILABLE

**26TH - 27TH
FEBRUARY**

A FUN OPPORTUNITY FOR KIDS TO GET
OUT, BE CREATIVE AND PLAY!

LOCATION:
SHIRENEWTON
SCHOOL

EMAIL:
REBECA.JAMES1@BTINTERNET.CO
TEXT 07484664592

ACTIVITIES:

FOOTBALL
TAG RUGBY
ROUNDERS

ARTS AND CRAFT
MUSIC / DANCE
PLAY TRAYS
BAKING

and more!



Children's Choir
Do you love to sing?

Do you want to sing the songs you love and learn new ones?

Do you want to have fun?

Join us every Monday from 4-5pm
at St Christophers Church, Pembroke Road,
Bulwark, NP16 5JW

For more info contact saintschepstow@churchinwales.org.uk